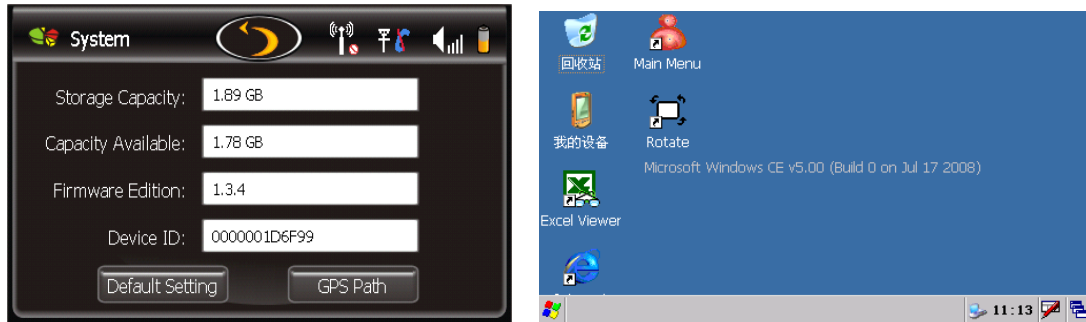


Steps to set up a new network on 4310

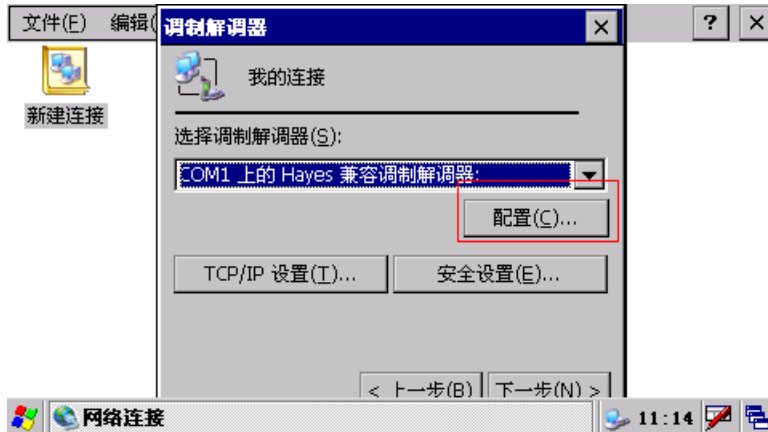
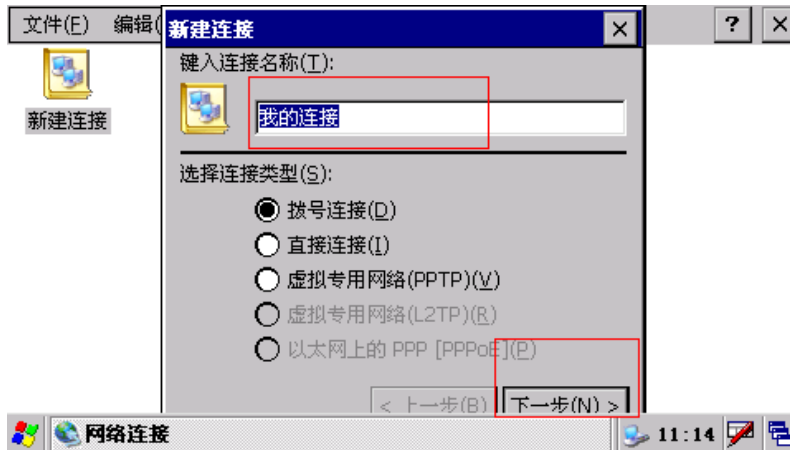
1. After boot-up, go to the setting page on the main screen, enter system settings, after enter system setting screen, long press “MENU” button, then go to WINCE desktop.



2. After enter WINCE screen, go to “Start-settings-network and dialing”.

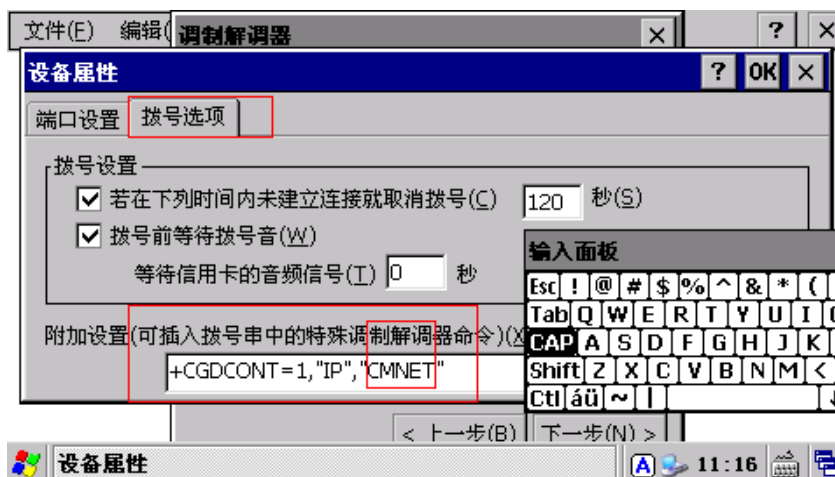
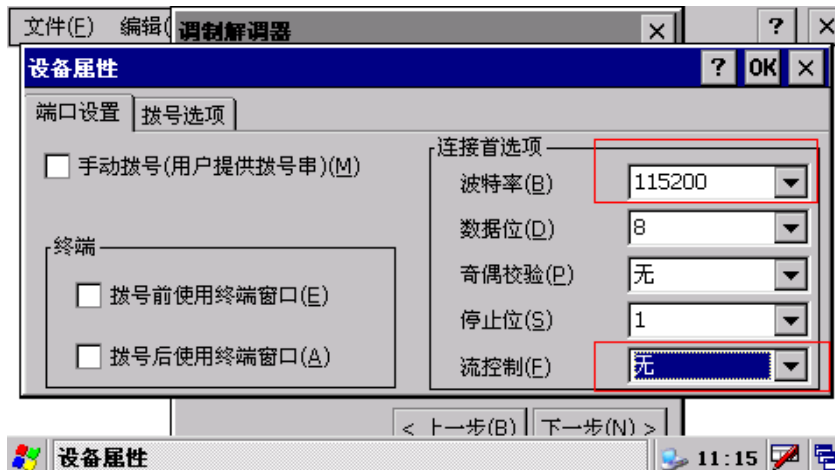


- 2.1. Double click “create a new connection”, input a name “GPRS”, go next step.



- 2.2. Click setting, go to configure the property. On comport setting, select “115200” as the

baudrate. Stream as “no”. Input [+CGDCONT=1,"IP", "CMNET"] onto the “additional setting” on “dial-up”. “CMNET is APN name, different service providers have different APN names. Press “OK” to complete the settings.



3. Go to “TRCP/IPsetting” and “security setting”, default setting is preferred.



4. “Next” to enter “phone number” setting. Input your phone number for accessing internet in your area on the "phone number". Different service providers would have different phone numbers to access internet.



5. IE will automatically recognize the connection as “GPRS”, so please name this new connection as “GPRS”. Otherwise, IE would not work.

